

## Product overview

REM is a single phase power monitoring device that provides both local and remote readings over SNMP.

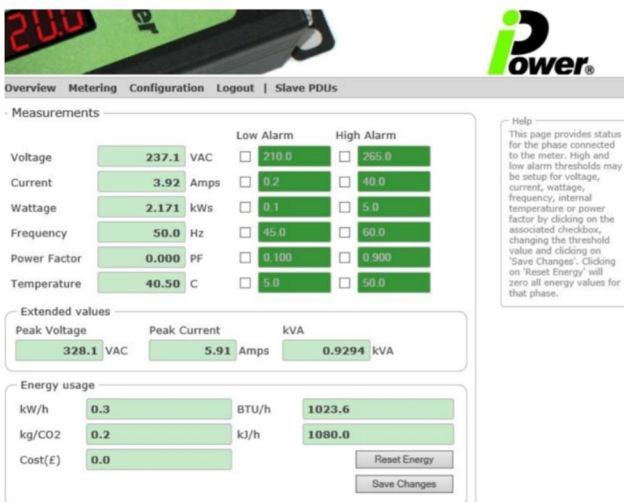
REM will take 14 different measurements with an accuracy of 1%, including Volts, Amps, watts, kWh & Power Factor, providing a thorough analysis of power usage across the connected devices.

REM can be an inline device for integrating with legacy systems, or included in a PDU design to provide a cost effective and powerful measuring tool.

REM is the latest member of the iPower™ family and fully compatible with our PDU Agent™ management platform

## Features

- ✓ Overall Energy Measurement up to 32A
- ✓ PDU Agent™ management software available FOC
- ✓ Flexible configuration & implementation
- ✓ Set Alerts for all critical metrics
- ✓ Send Alerts via Email
- ✓ Custom builds available



## Energy Metrics

iPower REM overall monitored measurement allowing min/max level thresholds to be set for:

- RMS Volts
- RMS Amps
- Kilowatts
- Internal Temperature
- Frequency
- Power Factor

Additional measurements include:-

- Peak Volts
- Peak Current
- kVA

Cumulative values include:-

- kWh
- kg/CO2
- Consumption cost
- kJ/H
- BTU/h



### Build Standard

- Full CE/WEEE/RoSH compliant
- Manufactured to BS EN 60950-1
- 5 year return to base warranty\*  
\*subject to terms and conditions



### Communication

- Communicates via IPV4 HTTP, SNMP, SMTP (email), XML, HTML, Telnet with access into SNMP PDU Agent™ and supplied MIB for 3rd party integration.